

LV JUICE

**A LEADER
IN THE FIELD
FOR OVER
90 YEARS**

Utilux is a leading brand of electrical connectors sold to original equipment manufacturers and electrical distribution companies throughout New Zealand, Australia, and Asia. A comprehensive range, the most-up-to-date production technology, and the highest quality control standards ensure that there are Utilux connectors of optimum reliability and durability for all major power distribution applications.

You can be sure that Utilux branded products are fabricated from the finest materials and produced to exacting tolerances. They represent the latest technology and best design for the tasks they need to perform.

COPPER LUGS & LINKS

Utilux has engineered the correct combination of material thickness and crimp die selection to ensure that the optimum compression ratios are achieved when crimping. Annealing also ensures that connectors can be crimped without damage and electro tinning minimises corrosion. These features combined with correct termination procedures will ensure a connection that will perform for many years.

FEATURES & BENEFITS

- Range 0.5 - 1200mm² available
- Seamless copper tube
- Electro tinned
- Cable area clearly identified on the lug
- Tested to AS/NZS 4325.1:1995



**FREE MULTI-COMPARTMENT TOOLBOX
WHEN YOU SPEND OVER \$250
ON UTILUX LUGS & LINKS* THIS MONTH**



*On one invoice, CG & CK ranges only



This Month

**FREE BAG OF PARTY
MIX LOLLIES**
WHILE STOCKS LAST

When you spend
over \$300 (excl
GST) on one
invoice this month



NEW ZONE 0 EXPLOSION
PROOF LIGHTING

PAGE 4

EVSE TESTING KIT

PAGE 7

ENVIRONMENTAL SPILL
PROTECTION

PAGE 8



TNFC FUSE CARRIERS



SAFECLIP FUSE FITTINGS 32A

- Self cleaning & aligning base contacts
- Clip-in – no tools required for fuse replacement
- Full shrouded contacts, IP20 degree of protection
- DIN rail mounting with easy to remove carrier
- Made from flame retardant thermoplastic
- Rated Voltage 550V
- Australian Standard AS60269 & BS88 Part 6

RS FUSE FITTINGS 63A

- Insulating sleeves to protect cable entry
- Full shrouded contacts, IP20 degree of protection
- Made from tough flame-retardant non-hydroscopic material
- Anti-vibration contact design
- Tapered shank on fuse fixing screws, easy re-entry
- Rated Voltage 690V
- Australian Standard AS60269

Cat No.	Rated Current	Type of Connection	Colour	Pack Quantity
TNFC32FW	32A	FRONT WIRE BASES	BLACK	10
TNFC32BW		BACK WIRE BASE	BLACK	
TNFC32PANEL		BUSBAR/FRONT, 1 STUD	BLACK	5
TNFC32STUD		2 STUD REAR, 2 STUD	BLACK	
TNFC63FW	63A	FRONT WIRE	BLACK	10
TNFC63BW		BACK WIRE	BLACK	

LV FUSES BY TE



NH NS TIA TIS TCP TFP TBC TC TF TKF JHU JPU JSU CYLINDRICAL

TE Connectivity's huge range of LV Fuses is IEC Approved and manufactured to the highest quality standards. Our stock is available with voltage ratings of 500, 550 & 690V AC, gG,Q1 & gG/gL classes, 80, 100 & 120kA rated breaking capacities, and Standard Specifications BS88-2 & IEC/EN 60269-2-1.

**STAGGERED • CENTRAL • OFFSET
• BARREL • J TYPE • DIN**



BUILD IT RIGHT WITH THESE ESSENTIALS



WELL-HUNG SUPPORT BRACKETS - INCREASED RANGE

Are You Well-Hung

Designed by and manufactured in Auckland, Well-Hung is a patented bracket system providing safe, fast and affordable installation of electrical wiring, data cables and other services.

Features

- Quick and efficient to install
- Safely separates wires and cables from metal ceiling battens
- Replaces older methods such as nailing, insulation tape, and cable ties
- Reduces possibility of accidental screw penetration or misplaced cables
- Complies with the New Zealand building standards and New Zealand electrical code of practice 3.2.1 & 3.5.1
- Allows multiple cables to be installed in a single bracket

No more messy, unsafe and time-consuming methods. Just clip on & go.



WELL-HUNG-R

For 50+70mm wide Rondo batten, single side



WELL-HUNG-C

For catenary wire 2.5-5mm O.D



WELL-HUNG-G

For Golden Homes batten, single side



PRICED FROM
\$1.25
+ GST EACH.*

AIRSTOP PENETRATION SEALS - BRANZ APPRAISED

To enable vapour retarders and other materials to fulfil their purpose as airtight layers in a building there must also be air-tight joints at cable entry points. Warm air finds its way inside building components through even the smallest of holes in the vapour retarder, where it then condenses. AIRSTOP Cable Sleeves remove the ability of air to move and cause drafts or condensation, guaranteeing that the construction is wind-tight and air-tight.

FEATURES

- Extremely flexible
- Resistant to ageing
- Integrated sealing plaster for airtight adhesion
- Rubber heat-resistant up to 160°C (short term)
- Can be applied to the inside or outside of the airtight layer
- BRANZ appraised

APPLICATIONS

- Cable entry points
- Openings for conduits

Product Specifications

COMPOSITION	EPDM RUBBER, SEALING PASTER WITH AGE-RESISTANT PURE ACRYLATE ADHESIVE
TEMPERATURE RESISTANCE OF ADHESIVE	-40°C TO +100°C
OPERATING TEMPERATURE	-5°C TO +40°C
AGE RESISTANCE OF ADHESIVE	30 YEARS
CABLE ENTRY RANGE	9 SIZES COVER FROM 8-160MM O.D. SINGLE ENTRY (8-12MM DUAL ENTRY ALSO AVAILABLE)

Cat No. AIRSTOP812-DUAL



ISOCELL

All Specials and Products featured in TRANSNET JUICE are available from all good electrical wholesalers.





BATTERY POWERED ZONE 0 EXPLOSION PROOF LIGHTING

Australian Made & Australian Designed

EXIN LIGHT explosion proof products carry T4 Classification and have been approved and certified as intrinsically safe by TestSafe Australia meeting the IECEx standards, Intertek UK meeting the ATEX standards, and TIIS conforming to Japanese standards. The compliance to these certifications ensures that EXIN LIGHT's EX90L range is suitable and safe in areas where flammable gases and combustible dusts are present, providing your requirement is within the certified classification of the selected model.

**NEW
PRODUCT**

Body

The EX90L body is constructed using an automotive resin type ABS747 making the EXIN LIGHT highly durable for use in mining, on oil rigs and in industries where there could be flammable gas or another potentially explosive atmosphere. Shock absorbing rubber on both the base and lid provides added protection.

Battery

The battery used in the EXIN LIGHT Explosion Proof Models is a purpose-built encapsulated Ni-MH battery. It is maintenance free and is only to be charged in accordance with the instructions provided.

Features

- IP65 ingress protection
- T4 temperature class (Max. 135°C)
- Charging time approx. 7-8 hours
- 9.6V rechargeable NiMH battery



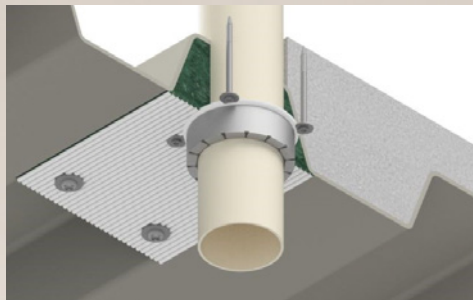
Cat No.	EX90L IIB 720 DS	EX90L T4 IIB 1440 SS	EX90L T4 IIC 720 SS
ZONE RATING	ZONE 0 (CLASS I DIVISION 1, CERTIFIED FOR USE IN ALL ZONES)		
GAS CLASS	IIB	IIB	IIC
NET WEIGHT (KG)	8.0	8.0	7.8
DIMENSIONS (MM)	335 W X 222 D X 880 H (OPEN)/582 (CLOSED)		
VOLTAGE AC/DC	100-240V AC/12V DC (MAX 1.8A)		
LIGHT TYPE LED	DOUBLE SIDED	SINGLE SIDED	SINGLE SIDED
LUMENS	720 (EACH SIDE)	HIGH 1440, LOW 720	720 (SINGLE SIDED)
BATTERY RUN TIME (APPROX.)	SINGLE SIDE 16-18 HOURS BOTH SIDES 8-10 HOURS	HIGH 8-10 HOURS LOW 16-18 HOURS	16-18 HOURS

SLIMLINE FIRE COLLARS BY RYANFIRE



Slimline fire collars consist of a Stainless Steel shell produced in two hinged halves, lined with intumescent material. They are designed to be placed around combustible pipes and fixed to compartment walls and floors with all steel anchors (supplied) in order to provide up to two hours of fire protection.

In a fire, the intumescent lining of the metal collar expands and crushes the heat softened plastic pipe leaving a potential path for fire completely sealed.

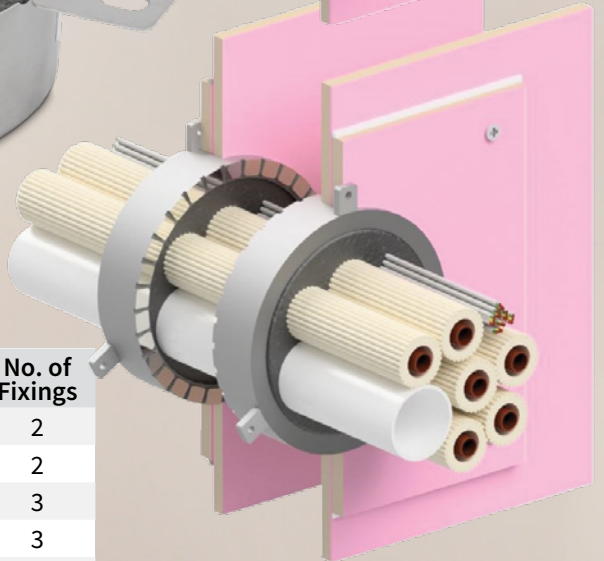
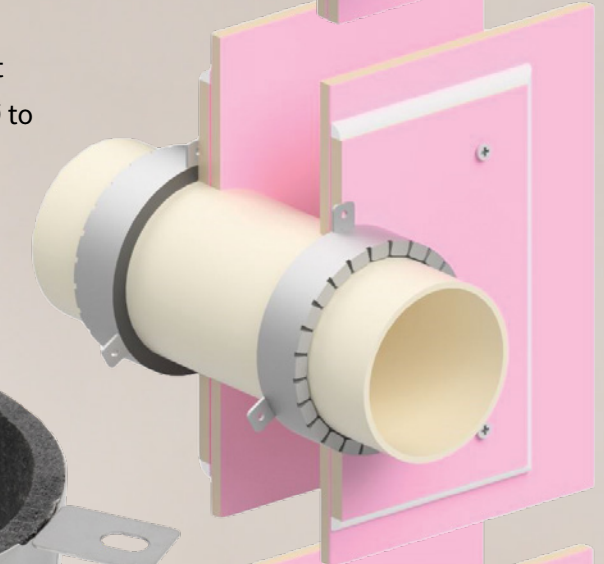
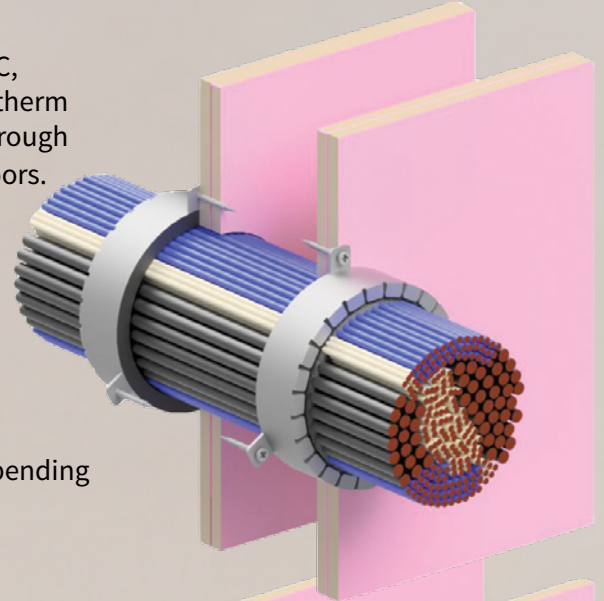


APPLICATIONS

Used to seal plastic (PVC-u, PVC, C-PVC, PP, PE, HDPE, PPR, Friatherm and ABS) pipes as they pass through fire compartment walls and floors.

FEATURES

- Ultra-slim flange and body design ensures easy installation in awkward situations
- Simple single click clasp
- Up to 2 hours fire rating, depending on system detail
- Stainless Steel
- Water resistant
- Non-corrosive: inert product
- Range of sizes from 50mm Ø to 160mm Ø



Cat No.	Application Range Within Collar (mm)	Outside Diameter of Collar (mm)	Height (mm)	No. of Fixings
FTSLCOLLAR50	45-55	70	30	2
FTSLCOLLAR65	55-65	80	30	2
FTSLCOLLAR80	75-85	95	30	3
FTSLCOLLAR100	95-110	135	30	3
FTSLCOLLAR125	115-120	145	45	3
FTSLCOLLAR150	145-160	195	45	3

NOTE: This table is a guide only, minimum/maximum sizes may differ depending on the application - please refer to the system datasheet or contact Ryanfire technical for advice.





RATCHET CABLE CUTTER

Handy single handed cutter with powerful ratchet action. Heavy duty comfort grip handle.

FEATURES

- 32mm diameter capacity
- 325mm² Al/Cu only
- AWG 600MCM
- 240mm length

RC32



RATCHET CABLE CUTTER

One or two handed tool, large capacity cutter with robust drive technology. Capacity – 52mm dia. 400mm² Al/Cu only.

FEATURES

- 52mm diameter capacity
- 400mm² Al/Cu only
- 280mm length

200183



1000V VDE INSULATED RATCHET WRENCH

FEATURES

- For use with all shear bolt connectors (IPCs and Fuse Carriers)
- 13mm and 17mm A/F sockets in one spanner
- Reversible ratchet
- Fits stainless steel nuts used in strain and suspension clamps
- Fixed sockets that can not be lost or dropped during installation
- 6 sided hex sockets protect integrity of plastic bolt heads

IRW13/17



1/2" DRIVE 9 PIECE 1000V VDE SOCKET SET

FEATURES

- 1 reversible ratchet, quick release 260 mm
- 1 extension bar, 125mm
- 7 sockets 10, 11, 12, 13, 14, 17, 19mm
- Supplied in plastic storage case with foam inlay
- 1/2" drive 9pc Metric 1000V

TN250900



PILLAR MULTIKEY

Designed for use with a number of pillar locks, including the ECOPillar locks and some on other pillars and cabinets already in use around the country. Includes TX40 antitamper torx bit. You don't need to carry four different tools, this one will do it all.

EPTOOL



CABINET KEY

FEATURES

- Lightweight metal body
- Size: 72 x 72 mm
- Inside square 6 mm
- Inside square 7 – 8mm
- Inside threesquare 7 – 8mm
- Double size 3 – 5 mm
- Keychain

110696





EVSE TEST TAGS

FOR ELECTRIC VEHICLE CHARGERS

All charging stations that can be used by the public require a periodic test to ensure correct operation and functionality of the charging station. TransNet now has EVSE test tags that can be used on both tethered and untethered charging stations. EVSE should never be tagged using an appliance test tag.

**NEW
PRODUCT**

TNTT-EVSE



Sold in packs of 20.

EVC-TESTPROMO

KIT CONTENTS

MI3102BT Tester

EVSE Test Tags x 20

Portable EVC Carry Bag

EV Adaptor Type 1 to Type 2 32A

Metrel EV Charger Tester Type 2

\$3399.00
PLUS GST

ELECTRIC VEHICLE CHARGER TESTING KIT

MI3102BT MULTIFUNCTION INSTALLATION TESTER

PACKED WITH FEATURES

- Built-in help screens for referencing onsite
- Built-in fuse tables for automatic evaluation of the line/loop impedance result
- Monitoring of all 3 voltages in real-time
- Automatic polarity reversal
- on continuity test
- Loop impedance test without tripping RCD
- Built-in charger and rechargeable batteries as standard accessory
- Automated RCD testing procedure

MEASURING FUNCTIONS

- Insulation resistance with DC voltage from 50V to 1000V
- Continuity of PE conductors with 200 mA test current with polarity change
- Continuity of PE conductors with 7 mA test current without RCD tripping
- Line & Loop impedance, Loop with Trip Lock RCD
- TRMS voltage & frequency
- Phase sequence
- RCD testing (general & selective, AC, A, F, **B**, & **B+**)
- Earth resistance (3-wire method)



PROTECT OUR WATERWAYS

Use Environmental Protection



TransNet New Zealand Ltd

Auckland

78 Cryers Road
East Tamaki
Auckland
NEW ZEALAND
Ph 0800 442 182
Fax 0800 442 183
PO Box 39 383
Howick, Auckland

Wellington

10 Petone Ave
Petone
Wellington
NEW ZEALAND
Ph 04 576 2530
Fax 04 576 0040
PO Box 39 383
Howick, Auckland

NEW ZEALAND

sales@transnet.co.nz

TransNet Tonga

Ma'ufanga

Small Industries
Ma'ufanga
TONGA
Ph +67 627 939
Fax +67 627 976
PO Box 2932
Nuku'alofa

TONGA

transnet@kalianet.to

ULTRA DRAINGUARD

Keep sediment, hydrocarbons and other pollutants out of the stormwater system. This large sediment accumulation pocket holds up to 18kg of silt, sediment and rubbish as well as 3.5L of oil and grease. Built-in overflow ports avoid flooding in heavy rain events. Sewn-in, lift-out straps make removal easy and prevent the Drain Guard from falling into the inlet. Simply lift grate, insert Drain Guard and replace grate to hold Drain Guard in place.

FEATURES

- One size fits most drains
- Made from a polypropylene geotextile
- Removes up to 3.5L of oil and 18kg of sediment
- Exceeds 75% TSS removal



Cat No.	Dimensions (mm)
U9217	1220 × 910 × 460

These general purpose spill kits can be used with any liquid spills including, oil, petrol, diesel, liquid chemicals, paint etc. Kits contains a mixture of loose absorbent fibre, absorbent socks and pads as well as the necessary PPE including gloves, safety specs, coveralls and a respirator plus instruction card and disposal bag. They come in a waterproof carry bag that can easily be carried to the spill and are ideal for vehicles.

NOTE: Not suitable for some strong acids including Nitric and Hydrofluoric Acid.



SK25 shown above

Kit Contents	SK25	SK50
SPILLTECH® UNIVERSAL PADS 400GSM	5	20
SPILLTECH® ULTRAZORB PILLOW	×	✓
SPILLTECH® ULTRAZORB SOCK 2.4M	✓	✓
SPILLTECH® ULTRAZORB 20L BAG	✓	✓
P2/N95 DISPOSABLE MASK	✓	✓
PAIR CHEMICAL GLOVES - XL	✓	✓
COMET SAFETY SPECS - CLEAR	✓	✓
BREATHABLE LAMINATE COVERALL	✓	✓
SPILLTECH® WASTE DISPOSAL BAGS	2	2
CABLE TIES	2	2
DUST PAN AND BRUSH SET	✓	✓
SPILLTECH® INSTRUCTION CARD	✓	✓
REFILL CODE	SK25-R	SK50-R

25L & 50L GENERAL PURPOSE SPILL KITS

TransNet NZ Ltd has made every reasonable effort to ensure the accuracy of this information and it is to the best of our knowledge correct and reliable. Under no circumstances does this constitute an assurance of any particular quality or performance and users should independently evaluate the suitability of products for their desired application. All information in this publication including pricing, drawings, illustrations, images and graphic designs are reflections of our current understanding. TransNet NZ Ltd reserves the right to make any adjustment to this information at any time. Our liability for the products outlined in this publication is set forth in our standard terms and conditions of trade. In case of any potential ambiguities or questions, please contact us for clarification.



NEW ZEALAND OWNED